



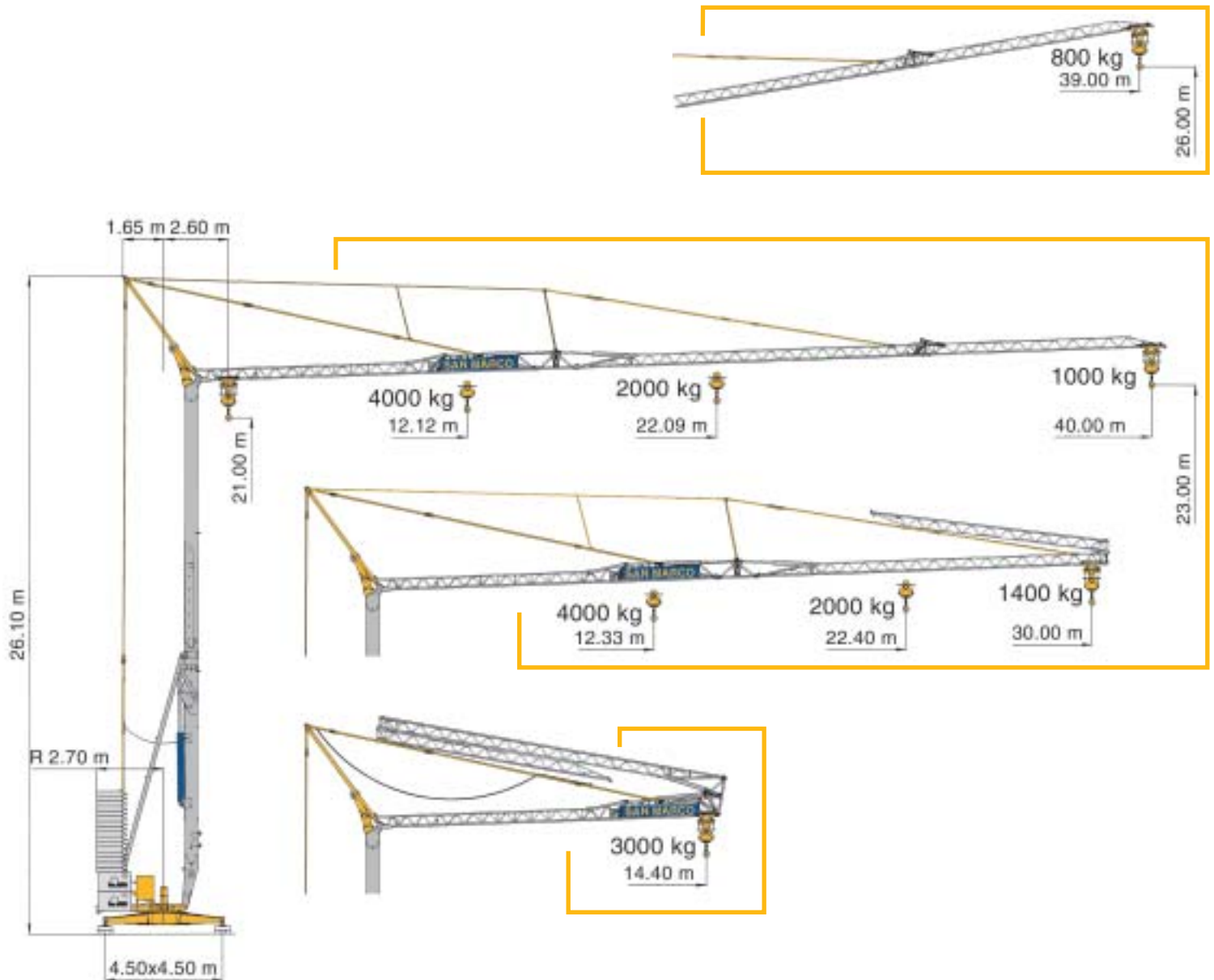


# Gru automatica idraulica SMH 401

## Triverter 444





-  Automatic crane hydraulic
-  Automatischer Hydraulischer Kran
-  Grue automatique hydraulique
-  Grua automatica hidraulica



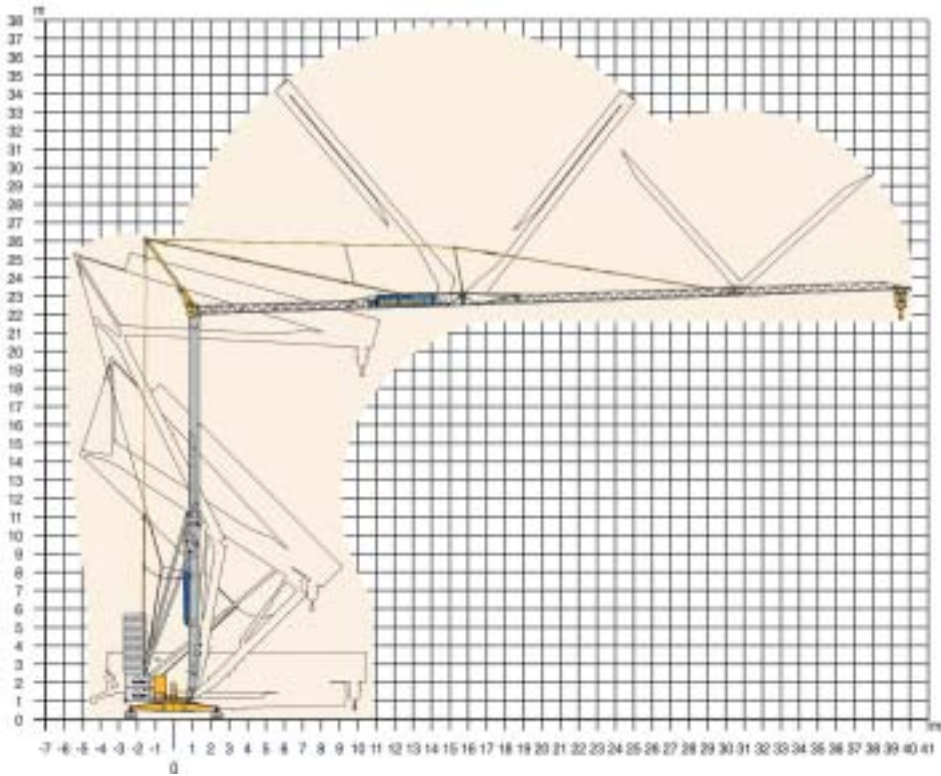
DIN 15018 H1 B3  
ISO 4301







## Montaggio

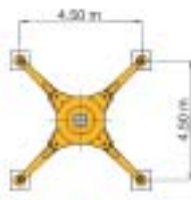
-  Erection
-  Montage
-  Montage
-  Montaje

kW	4
----	---



## Reazioni (F) e pesi (P)

-  Reactions (F) - Loads (P)
-  Eckdrücke (F) - Krangewicht (P)
-  Réactions (F) - Poids (P)
-  Reacciones (F) - Pesos (P)



F	P
35 t	49 t

In servizio • In service  
In Betrieb • En service  
En servicio

F	P
21 t	45 t

Fuori servizio • Out of service  
Ausser Betrieb • Hors service  
Fuera de servicio


## Diagrammi di carico

-  Loads diagrams
-  Lastkurven
-  Courbes de charges
-  Curvas de carga

Braccio impennato  
Inclined jib  
Schräggestellter Ausleger  
Flèche relevée  
Flecha inclinada



Carrello traslante  
Traversing trolley  
Verfahrbare laufkatze  
Chariot distributeur  
Carro distribuidor

 Kg	40
800	39.00 m

Braccio orizzontale  
Horizontal Jib  
Flèche horizontale  
Waagerechter Ausleger  
Flecha horizontal



Freccia chiusa  
Closed Jib  
Auslegerspitze zu  
Flèche fermée  
Flecha plegada



 Kg	40	30	15.50
4000	12.12 m	12.33 m	
3000	16.21 m	16.58 m	14.40 m
2000	22.09 m	22.40 m	
1800	24.59 m	25.19 m	
1600	27.10 m	27.76 m	
1400	30.24 m	31.00 m	
1200	34.32 m		
1000	40.00 m		

# Gru automatica idraulica SMH 401

## Triverter 444

### Potenza elettrica necessaria

- Power requirement
- Anschlusswert
- Puissance électrique nécessaire
- Potencia eléctrica necesaria

kW	20
----	----

### Alimentazione elettrica

- Mains supply
- Netzstrom
- Réseau électrique
- Alimentación eléctrica

V	380 (+5%)
Hz	50

### Carrello - Variatore (Inverter)

- Trolley - Speed controller
- Katzfahren - Unrichter
- Chariot - Variateur
- Carro - Variador

m/min	10	20	30
kW	1.8		

### Sollevamento - Variatore (Inverter)

- Hoisting - Speed controller
- Heben - Unrichter
- Levage - Variateur
- Elevación - Variador

m/min	12	25	38	50	6	12	19	25
kg	2000	2000	1400	1000	4000	4000	2800	2000
kW	8.8				8.8			

### Rotazione - Variatore (Inverter)

- Slewing - Speed controller
- Schwenken - Unrichter
- Orientation - Variateur
- Orientación - Variador

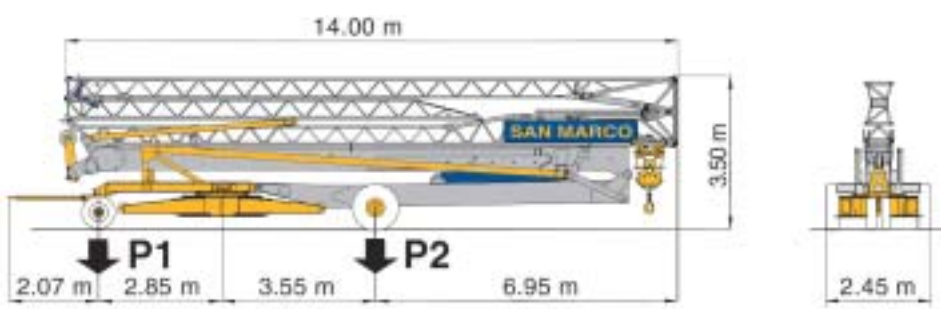
rpm	0.1	0.3	0.5
kW	3		

### Trasporto

- Transportation
- Transport
- Transport
- Transporte

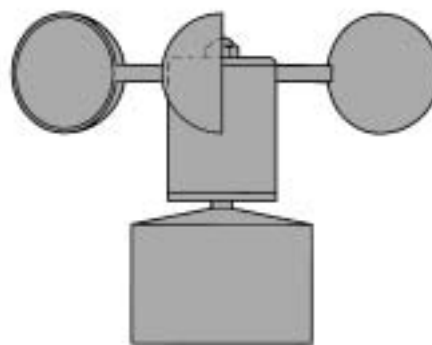
P1 2800 kg	P2 16200 kg
P1 + P2 19000 kg	

Con assali senza zavorra • With axles without ballast • Mit transportachse ohne Ballast • Avec essieux sans lest • Con ejes sin contrapeso



### Anemometro

- Anemometer
- Windmesser
- Anémomètre
- Anemómetro



segnalatore ottico  
segnalatore acustico  
campo di regolazione:  
01 km/h - 250 km/h

visual danger signal  
auditory danger signal  
control field:  
01 km/h - 250 km/h

optischer Gefahrensignale  
akustischer Gefahrensignale  
Verwendungsbereich:  
01 km/h - 250 km/h

signau visual  
signau auditif  
champ d'emploi:  
01 km/h - 250 km/h

señalador optico  
señalador acustico  
campo de regulacion:  
01 km/h - 250 km/h

- media/grande velocità sollevamento • medium/major hoisting speed • mittel/große Hubgeschwindigkeit • moyenne/grande vitesse de levage • velocidad media/gran velocidad elevacion
- media/grande velocità rotazione • medium/major rotation speed • mittel/große Drehgeschwindigkeit • moyenne/grande vitesse orientation • velocidad media/gran velocidad giro
- media/grande velocità carrello • medium/major trolley speed • mittel/große Katzgeschwindigkeit • moyenne/grande vitesse chariot • velocidad media/gran velocidad carro

- lontano braccio (sx) - vicino braccio (dx) • distant jib (sx) - near jib (dx) • Ausladung fern (sx) - Ausladung nah (dx) • flèche lointain (sx) - flèche proche (dx) • carro punta (sx) - carro torre (dx)
- salita sollevamento (sx) - discesa sollevamento (dx) • load block up (sx) - load block down (dx) • Heben Hebevorgang (sx) - Senken Hebevorgang (dx) • montée levage (sx) - descente levage (dx) • subida de gancho (sx) - bajada de gancho (dx)
- rotazione sinistra (sx) - rotazione destra (dx) • left rotation (sx) - right rotation (dx) • Drehung links (sx) - Drehung rechts (dx) • orientation gauche (sx) - orientation droite (dx) • giro izquierda (sx) - giro derecha (dx)

